

Step 1 →
HOMEWORK

Take out your prep. phrase wkst.

Step 2 →
Notes heading

Write down title & date.

Archetypes

A Day: 9/14/16

B Day: 9/15/16

Step 3 →
Start the **Welcome Work**

Journal #5: FREE WRITE (page 13)

Song of the day: "Hey Jude" by The BEatles

12 Subject/Verb Review



1. Cross out prepositional phrases.

2. Look for linking verbs. → BOX

3. Look for action verbs → BOX

4. Find the subject. → CIRCLE

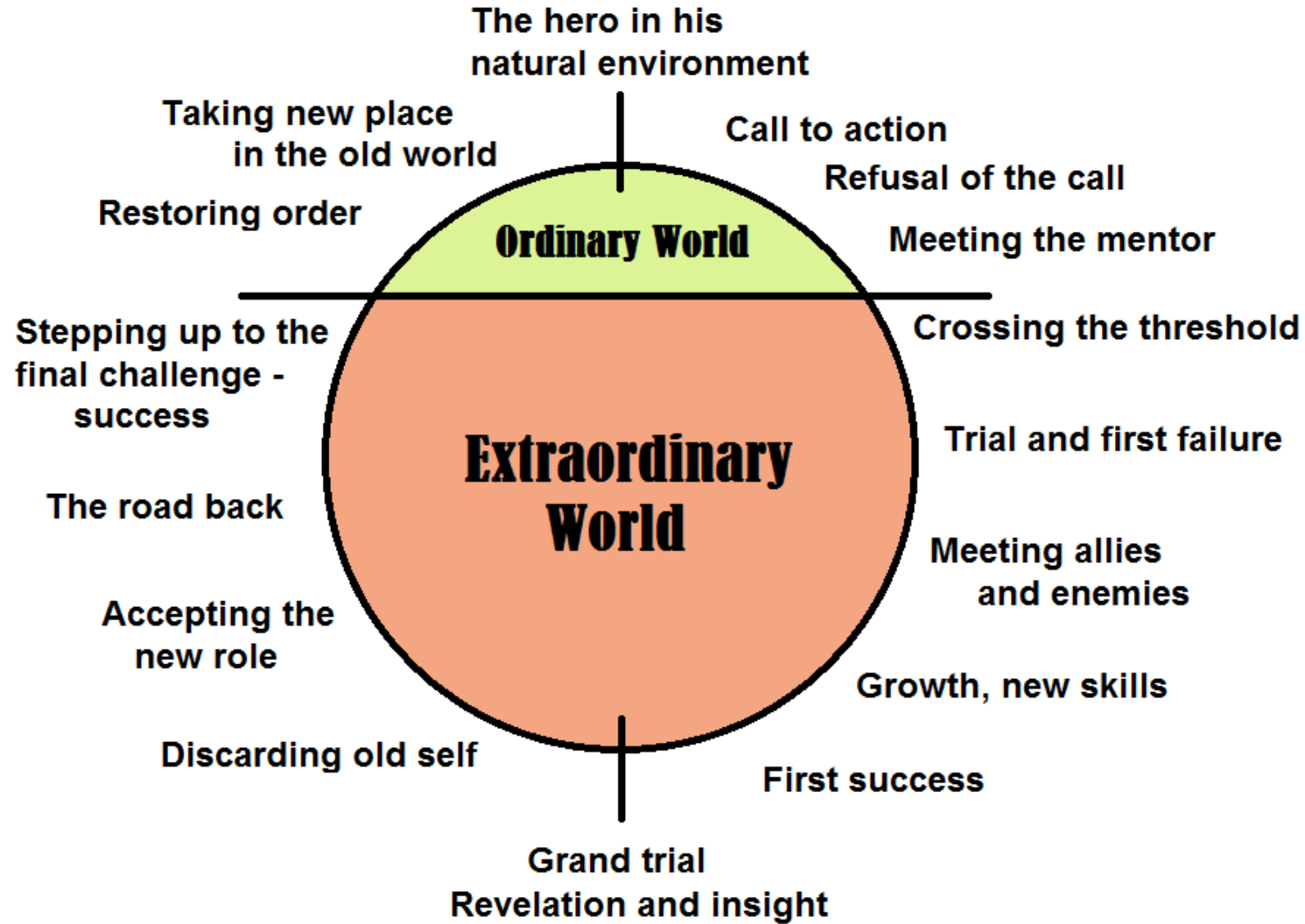


Journal #5: Free Write

13



Prepositional Phrase Review: Doc Cam

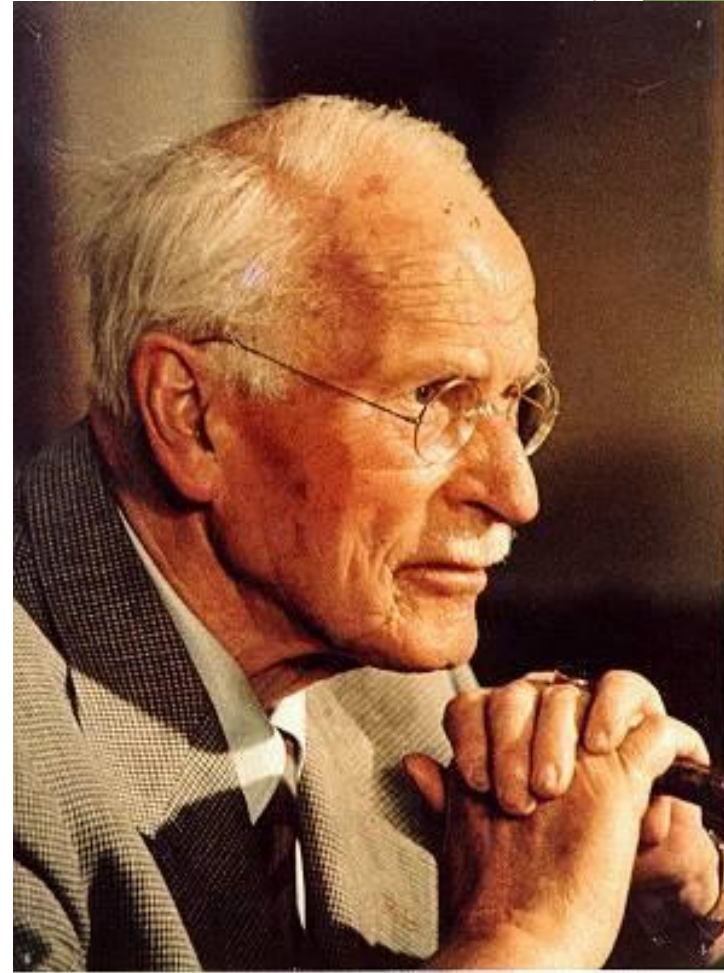


ARCHETYPE NOTES



WHAT IS AN ARCHETYPE?

- ▶ **CARL JUNG** discovered that humans have a “preconscious PSYCHIC disposition.” In other words, humans all share certain unconscious, INSTINCTUAL ideas, dreams and notions. When these ideas come out in images or in literature, we call them ARCHETYPES.



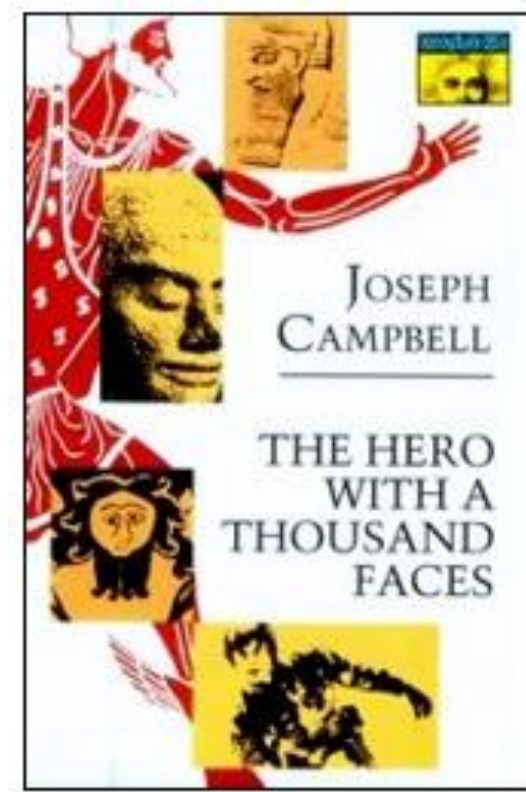
▶ According to Jung, archetypes are a result of a **Universal Unconsciousness**, and because of this, **Universal Patterns** begin to surface in art.





- ▶ This is why so many stories, tales, epics and parables share **SIMILAR characters, symbols, themes and stages of plot development**; even literature written in different parts of the world, in different **CULTURES** and at different times in **HISTORY!**

- ▶ Stories also share patterns; these patterns will often take a CIRCULAR form from the beginning to the end of the story. One example of this is the **hero's journey** or the **hero cycle**.



ARCHEYTPE DEFINED:

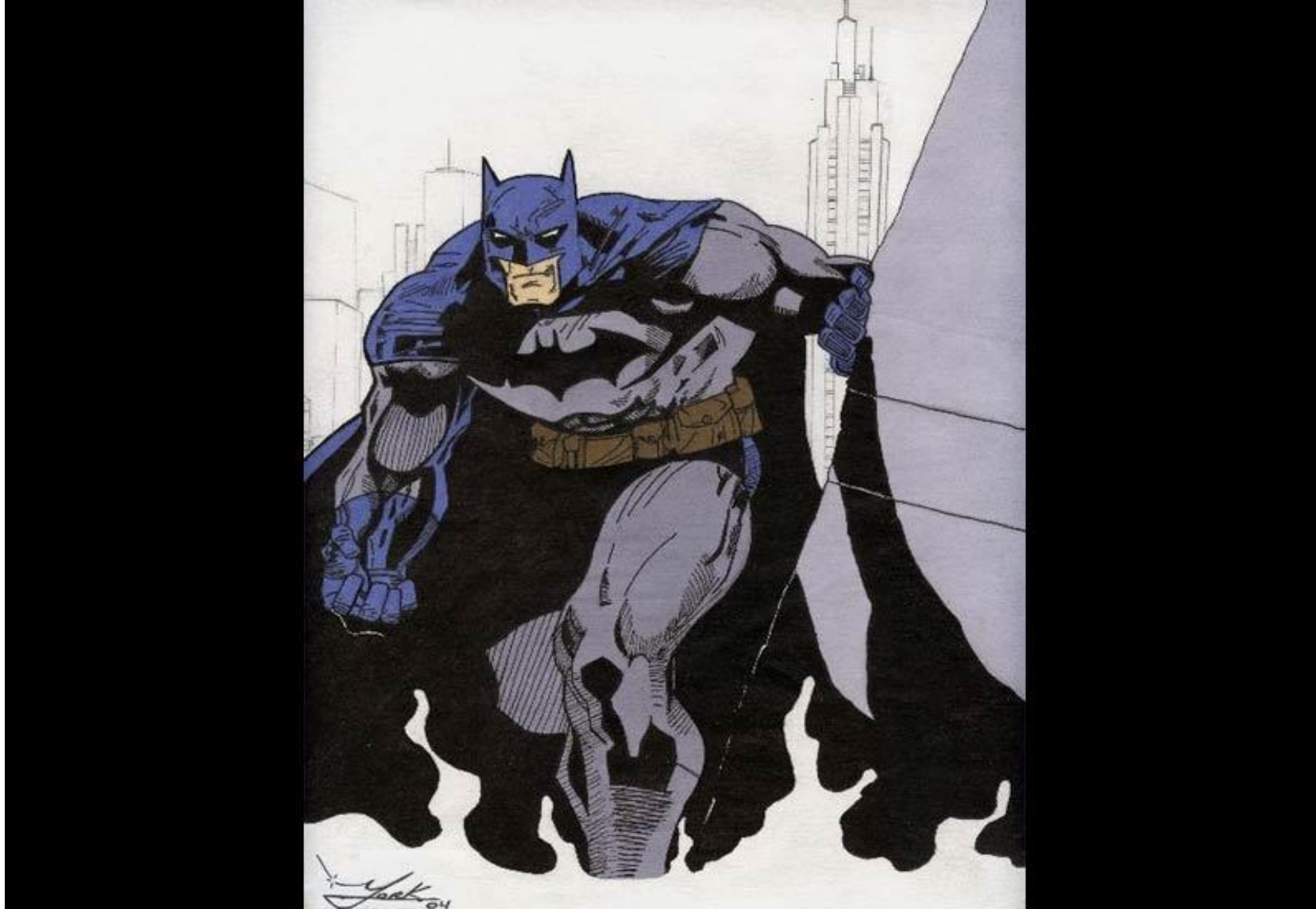


It is a recurring pattern of characters, situations, or symbols existing universally and instinctively in man's unconscious.

CHARACTER ARCHETYPES



HERO/ HEROINE



HERO

- ▶ Mysterious birth
- ▶ Homeward bound
- ▶ Loses favor
- ▶ Transfers from External to Internal World
- ▶ Is often Reborn in some way
- ▶ Will often Discover that they “had the power all along”



The Hero- Quotes from Joseph Campbell's *The Hero With a 1000 Faces*

- “The hero is a man of **self-achieved submission**. But submission to what? That precisely is the riddle that today we have to ask ourselves and that it is everywhere the **primary virtue and historic deed of the hero to have solved.**” (16)
- “The first step, **detachment or withdrawal**, consists in a radical **transfer of emphasis from the external to the internal world**, macro- to microcosm...” (17)
- “...so that he comes back as one **reborn**, made great and filled with creative power... **to see again what has always been revealed.**” (36)
- “The **godly powers sought and dangerously won** are revealed to have been **within the heart of the hero all the time.**” (39)

MENTORS: someone the hero looks up to and who teaches the hero what they need to know.



LOYAL RETAINERS: those who stand beside the main character through everything



FRIENDLY BEAST

Appears to be a horrible monster, but has a heart of gold and helps our hero.



EVIL FIGURE-GOOD HEART

- ▶ Saved from eternal evil or wrongdoings by hero's nobility
- ▶ Saved by love



Outcast

- ▶ Wanderer
- ▶ Disagrees with societal norms



SCAPEGOAT:

one who is blamed for other's actions or wrongdoings



SCAPEGOAT

The Secret To Success Is Knowing Who To Blame

DEVIL FIGURE



An evil figure with devil-like characteristics

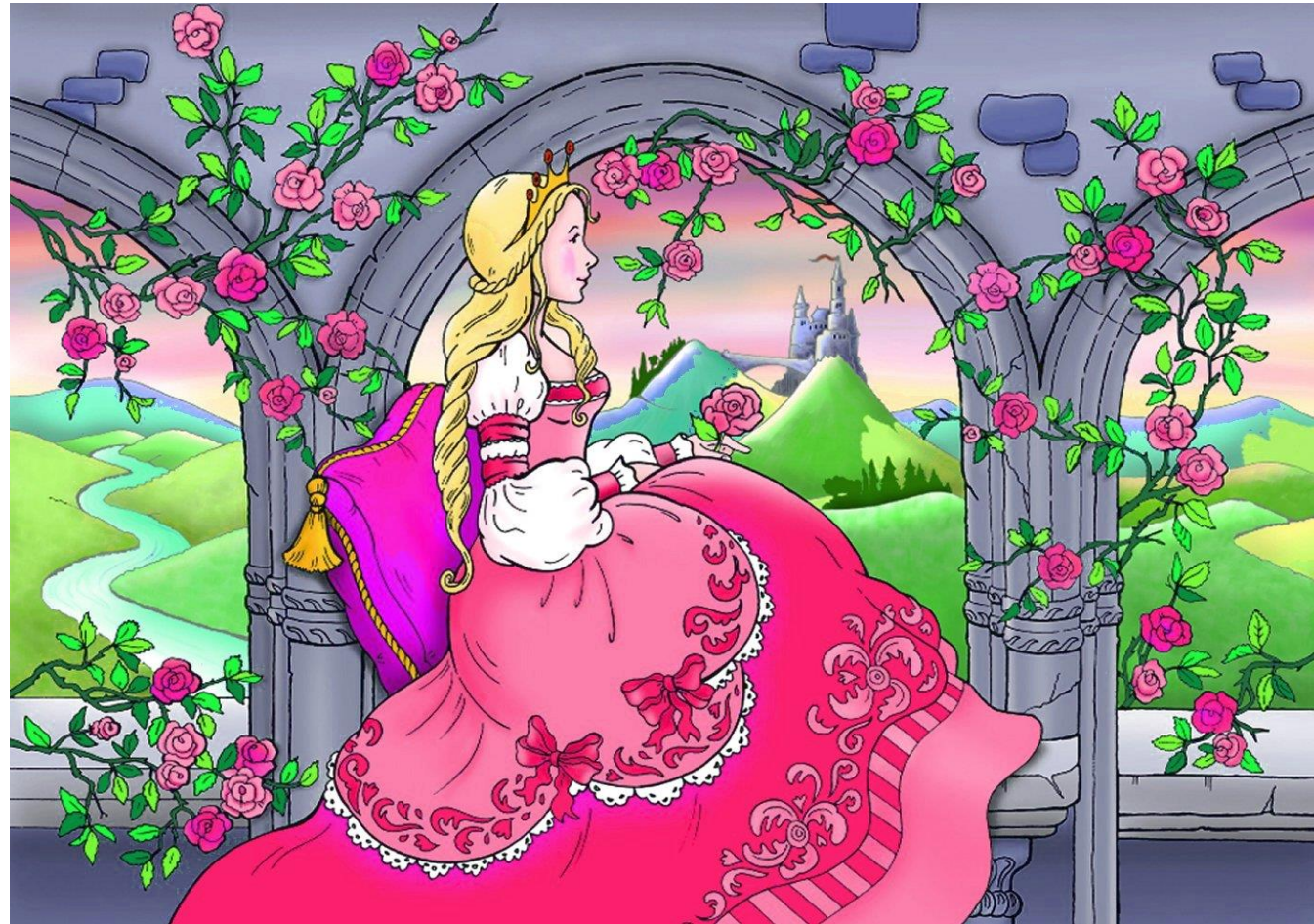
CREATURE OF NIGHTMARE

An evil creature born from man's (often our hero's) deepest, darkest, psychological fears.



WOMEN:

“The Meeting with the Goddess”



THE EARTH MOTHER

“She is the world creatrix, ever Mother, ever virgin.” (114, The Hero With a 1000 Faces, Joseph Campbell)

**Goddess type figure
who gives life and
guides our hero**



THE TEMPTRESS

Tempts our hero to abandon his quest, often with promises of riches, beauty, love or lust.



THE PLATONIC IDEAL



The ultimate woman who, for various reasons, is not romantically involved with the hero.

THE UNFAITHFUL WIFE

Through her adultery, an entire kingdom, quest, or world may be destroyed.
Lesson: DON'T CHEAT!

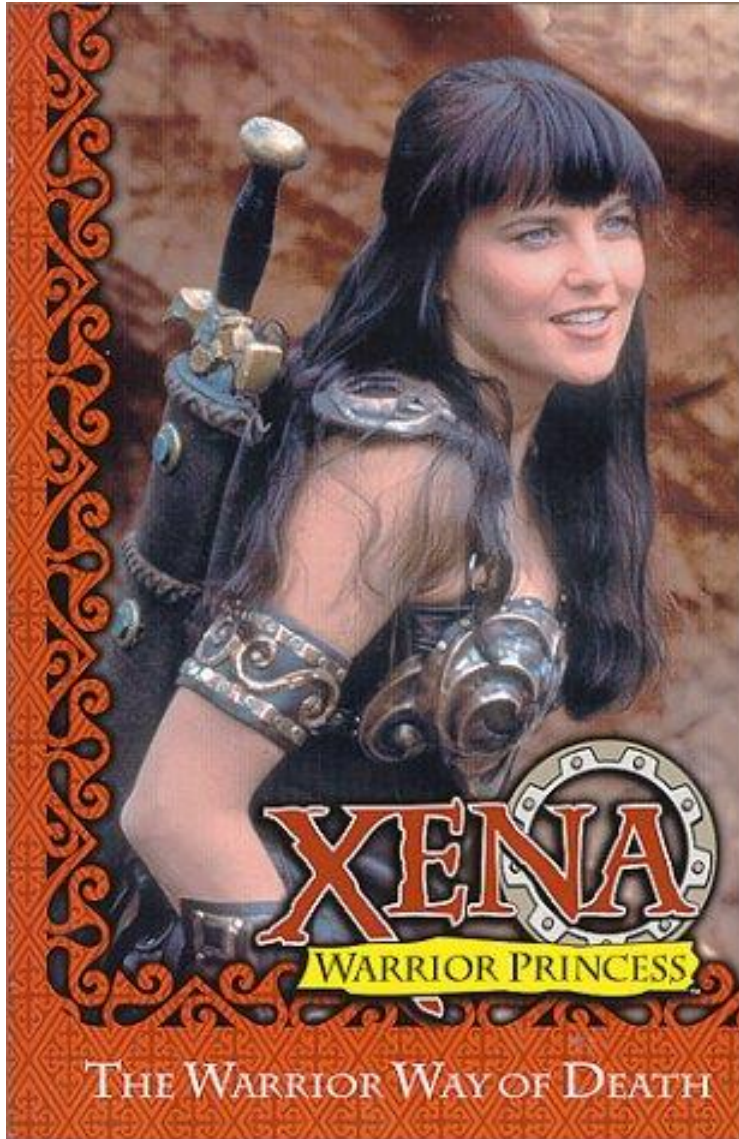


THE DAMSEL IN DISTRESS



A woman, often of noble birth, who must be saved by our hero.

WARRIOR



A relatively modern archetype where a female warrior battles evil with brute force, strength and cunning.

STAR-CROSSED LOVERS



- ▶ Can be viewed as character or situational, when fate, the gods, or other mystical outside forces work against true love. I know, it's sad.

HUNTING GROUP COMPANIONS

- ▶ Can also be viewed as either a situational or a character archetype. Often a group of hunting companions will become lost in the woods and unwillingly discover adventure and danger there.



FATHER-SON CONFLICT

(can also be viewed as a situational archetype, but does effect the characters that are involved)

- ▶ Separation
- ▶ Disagreement between father and son
- ▶ Resentment of father by his son



Identify Archetypes in this *Batman Begins* clip:

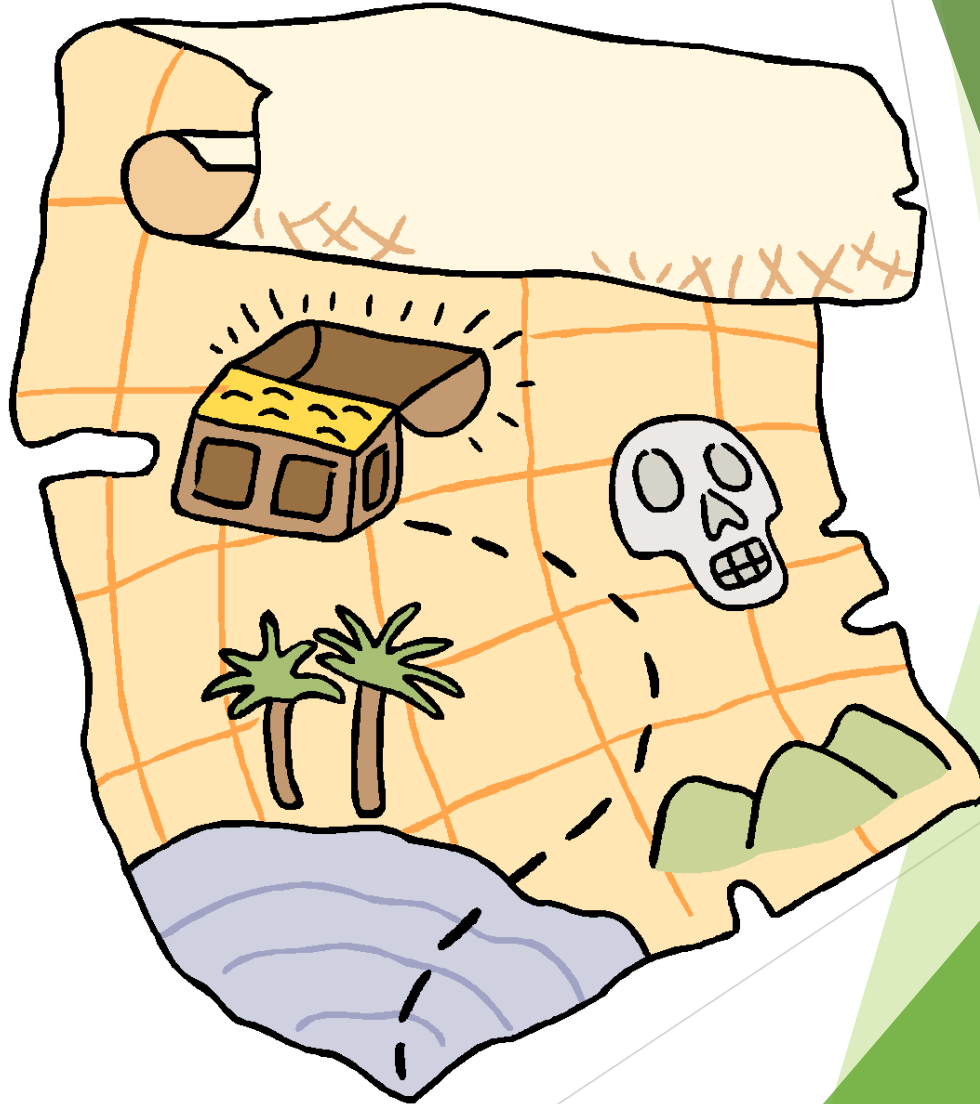


SITUATIONAL ARCHETYPES



QUEST

- ▶ Describes the search for someone or something, which, when found and brought back will restore a wasteland, bring peace or heal the desperation of a leader's illness/disability



TASK



- ▶ May include saving the kingdom, winning the fair lady, rescuing the damsel in distress. The hero must perform some sort of superhuman deed, so he may resume his rightful position. NOT the same as the quest.
- ▶ Example: Arthur pulls Excalibur from the stone

JOURNEY

- ▶ Sends hero in search of some truth or information which is necessary to restore the kingdom. Usually the hero descends into a real or psychological hell and is forced to discover the blackest truths; these often concern his own faults.



Initiation

- ▶ Generally initiates hero into adult life. Adolescent comes into maturity with new awareness and skills as well as new hope for the community.



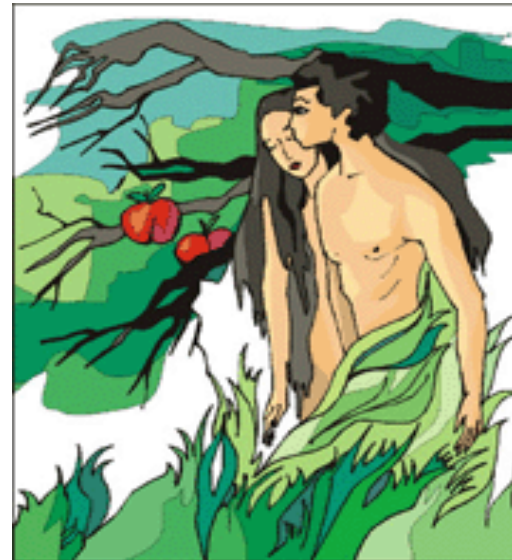
THE RITUAL

- ▶ This is the actual ceremony that will mark the initiate's rite of passage into another state of being.



THE FALL

- ▶ Describes a descent from a higher to a lower state of being. The experience involves a loss of innocence & bliss & is often accompanied by expulsion from a kind of paradise as penalty for disobedience.



DEATH & REBIRTH



The hero goes through some form of metamorphosis (usually physical, psychological AND spiritual) which, in some way, symbolizes, or is symbolized by, his/ her death and rebirth.

NATURE vs. MECHANISTIC WORLD

- ▶ Nature= good
- ▶ Technology/ society= bad



BATTLE BETWEEN GOOD AND EVIL

- ▶ Mankind often shows eternal optimism in the continual portrayal of good triumphing over evil in spite of great odds.



UNHEALABLE WOUND

- ▶ The wound is either physical or psychological & cannot be fully healed; this often indicates the loss of innocence. These wounds often ache and drive the sufferer to desperate measures.



THE MAGIC WEAPON

- ▶ The weapon symbolizes the extraordinary quality of the hero because no one else can wield the weapon or use it to its full potential. It is usually given to the hero by a mentor figure.



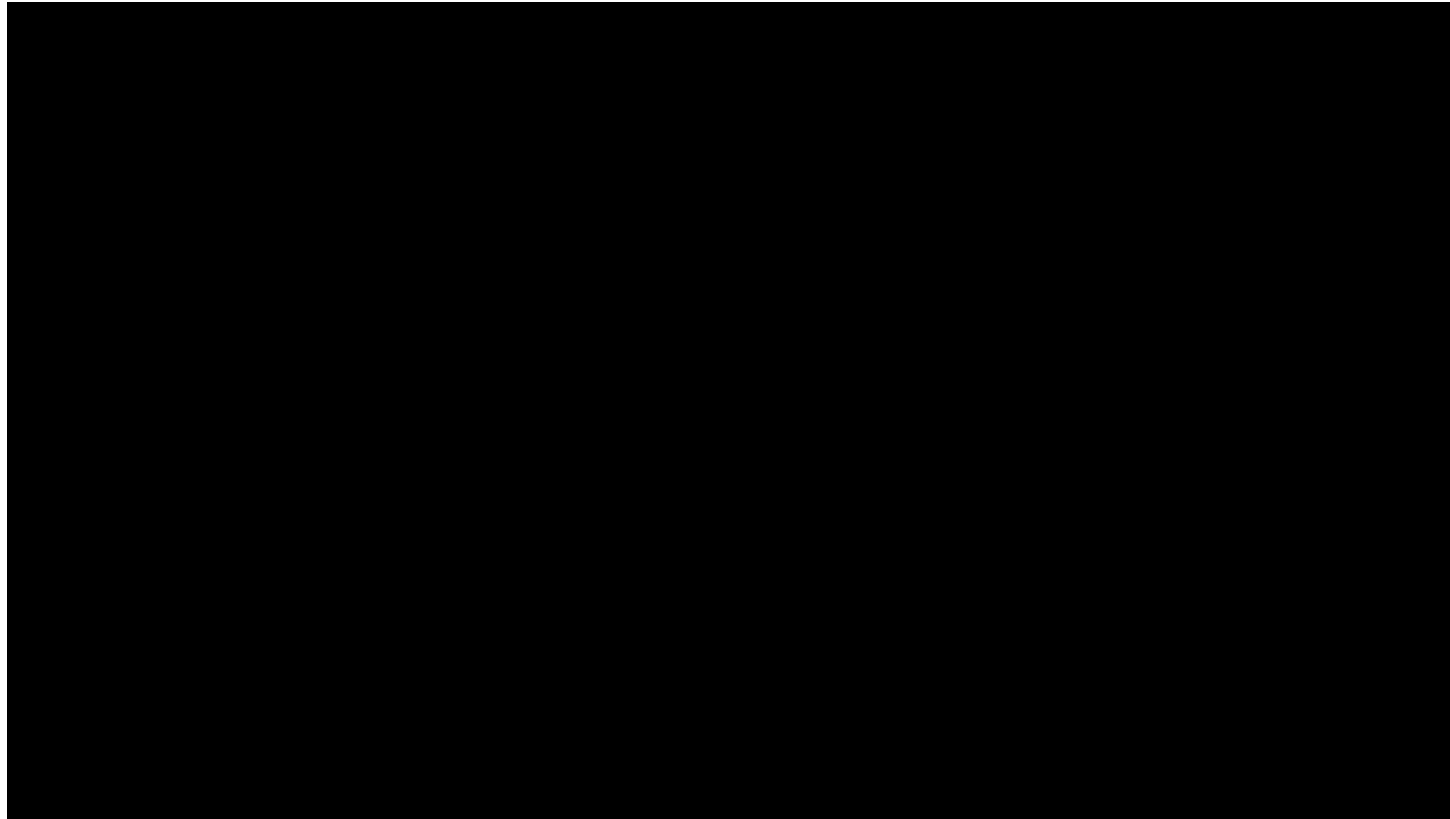
Identify Archetypes in the *Harry Potter* clips (part I):



Harry Potter part II



Harry Potter part III



SYMBOLIC ARCHETYPES



LIGHT & DARKNESS

- ▶ Light= enlightenment, wisdom, good
- ▶ Darkness= the unknown, ignorance, evil

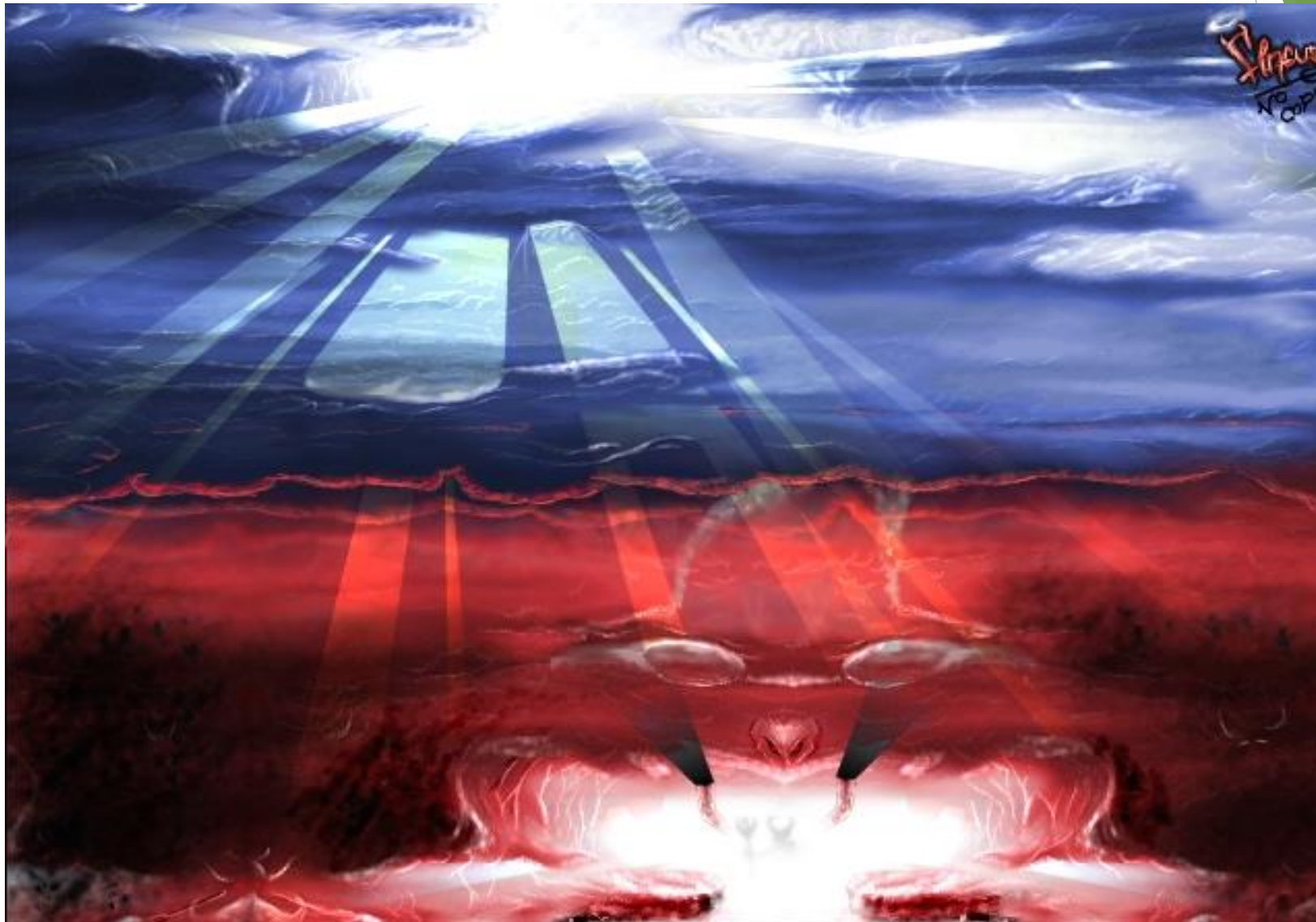


WATER & DESERT

- ▶ Water= birth, rebirth, creation, purification, growth
- ▶ Desert= spiritual aridity, death, hopelessness



HEAVEN & HELL



INNATE WISDOM vs. EDUCATED STUPIDITY



HAVEN vs. WILDERNESS



THE SUN

- ▶ Sun= creative energy, thinking, enlightenment, wisdom, spiritual vision
- ▶ Rising Sun= birth, creation, the beginning of something
- ▶ Setting Sun= death, the end of something



SERPENT (SNAKE, WORM)

- ▶ Symbol of energy and pure force (libido), evil corruption, sensuality, destruction, evil



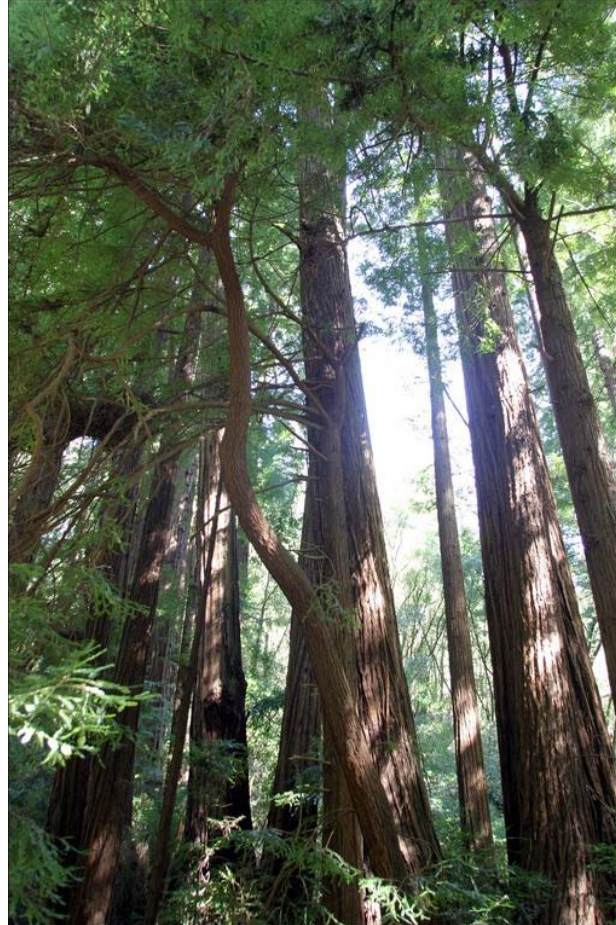
GARDEN

- ▶ Paradise, innocence, unspoiled beauty



TREE

- ▶ Growth, proliferation, immortality, phallic symbol, denotes life of the cosmos



SEASONS

- ▶ Spring= rebirth, genre= comedy
- ▶ Summer= life, genre= romance
- ▶ Fall= dying, descent, genre= tragedy
- ▶ Winter= death, nothingness, genre= irony

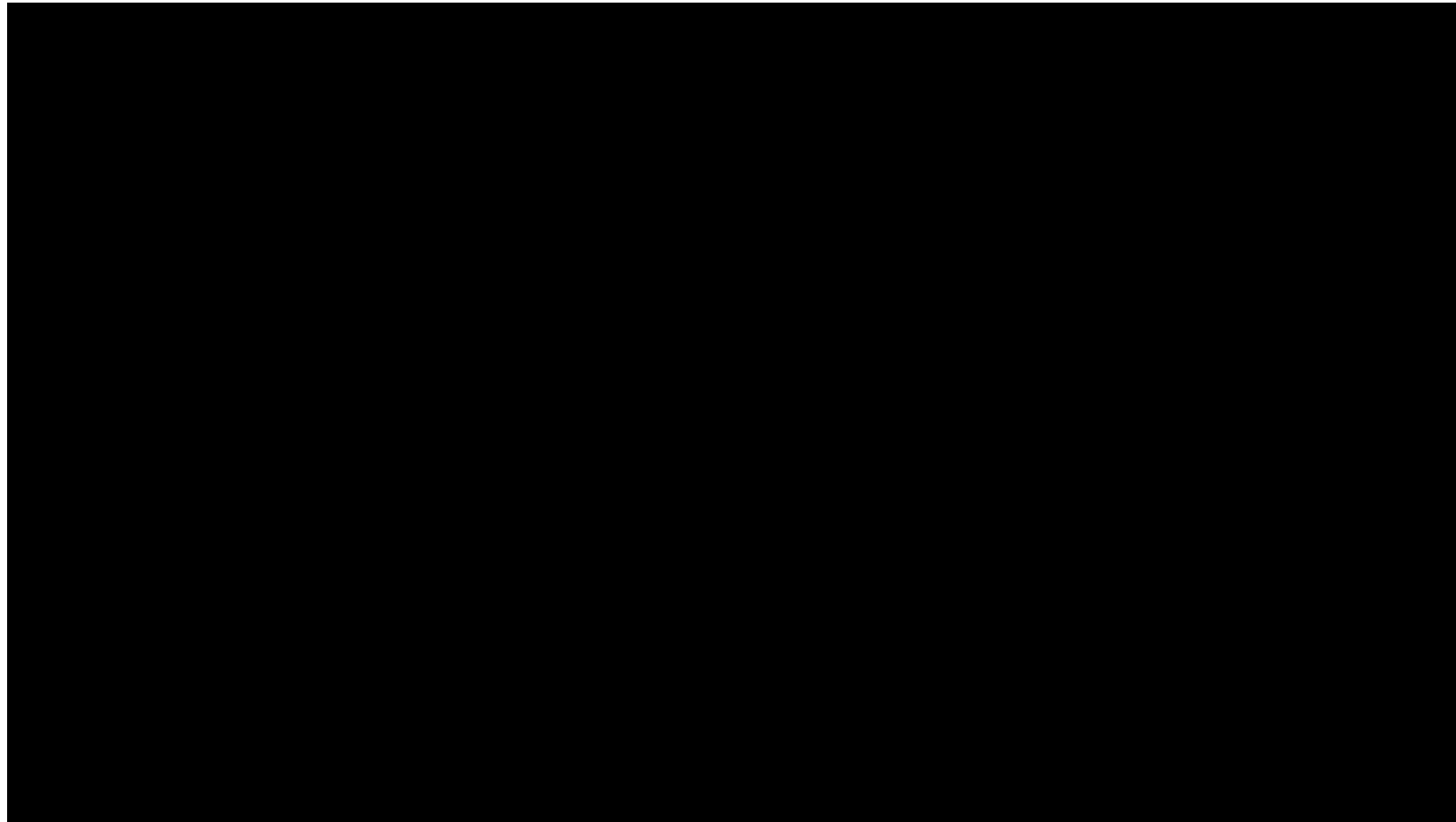
NUMBERS

- ▶ 3= light, spiritual awareness, unity
- ▶ 4= circle, life cycle, four seasons, earth,
- ▶ 6= evil, sin, man
- ▶ 7= completion of a cycle, perfect order, religion, (3+4=7), luck
- ▶ 13= evil, unlucky

COLORS

- ▶ **Red:** blood, sacrifice, passion, disorder, violence
- ▶ **Green:** growth, hope, fertility, nature
- ▶ **Blue:** positivity, tranquility, security
- ▶ **White:** light, purity, innocence (negative: nothingness, terror, death)
- ▶ **Yellow:** enlightenment, wisdom
- ▶ **Black:** evil, darkness, chaos, mystery, the unknown, death

Identify Archetypes in the *Penelope* clip:



THE END

Keep these notes in your binder to refer to throughout the year!

You will be tested on these concepts.

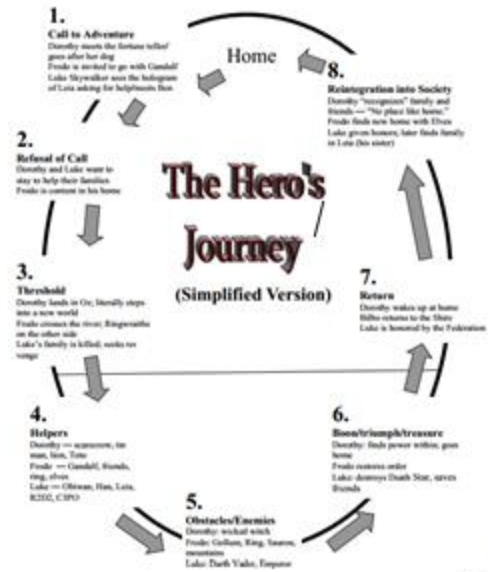
Archetype Homework: **On a separate piece of paper!**

Due _____




- Pick your favorite movie or novel.
- Fill in the relevant steps of the Hero's Journey and then list the archetypes present.
- This should be neat/worthy of display!

_____/5	Neat, title on top, work on a separate piece of paper, without errors
_____/5	Pictures/graphics making it "display worthy"
_____/40	<u>At least 8 steps</u> of the Hero's Journey are presented in the correct order
_____/30	Three character archetypes
_____/10	<u>One</u> situational archetype
_____/10	One symbolic archetype

The Wizard of Oz



Character Archetypes

Hero	Loyal Retainers	Mentor
		
Dorothy	Lion, Tin Man, Scarecrow	Glinda the Good Witch

Situational Archetype: The Magic Weapon



Ruby Slippers

Symbolic Archetype: Green as a symbol of hope



Emerald City

HOMEWORK: A Day

- Due Monday, September 19
 - Archetype & Hero's Journey HW.

HOMEWORK: B Day

- Due Friday, 9/16
 - Read **one** Cinderella story (found on the class website) → Make sure each group member reads a different one!
 - French
 - Chinese
 - Russian
 - “Politically Correct” Cinderella
- Due Tuesday, 9/20
 - Archetypes/Hero’s Journey HW